

22SN0097 – Midlothian



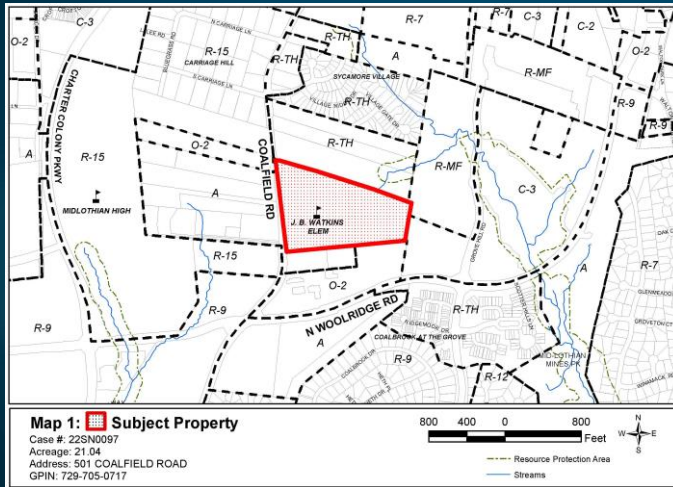
Chesterfield County Planning Commission (J.B. Watkins Elementary School Sign)

Conditional use to permit a computer-controlled, variable-
message, electronic sign (EMC) sign in an Agricultural (A)
District on 21.04 acres

This is case 22SN0097 in the Midlothian District.

Conditional use to permit a computer-controlled, variable-message, electronic message center (EMC) sign at J. B. Watkins Elementary School is requested.

22SN0097 – Overview



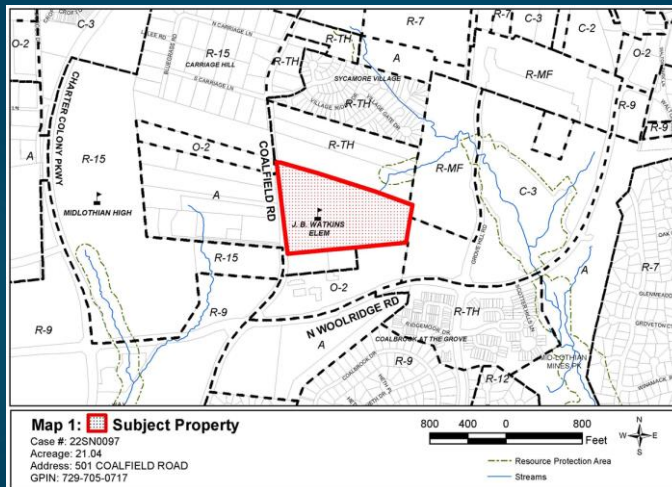
1. Conditional use for an EMC sign at J. B. Watkins Elementary School
2. Located in Midlothian Area West where EMC signs are prohibited
3. Conditions restrict the EMC component
4. Staff recommends approval.

Conditional use for an EMC sign at J. B. Watkins Elementary School is requested. The school is located in the Midlothian Area West Design District, where EMC signs are prohibited.

The proposal for the sign is to retrofit the changeable copy portion of the existing sign at the school with the new EMC component. Conditions restrict the EMC component of the sign.

Staff recommends approval of this request.

22SN0097 – Zoning Map



The subject property, which is zoned Agricultural (A), is shown outlined in red.

Properties to the north of the subject property are zoned Residential Townhouse (R-TH). Properties to the west and south of the subject property are zoned Agricultural (A) and Corporate Office (O-2). Properties to the east of the subject property are zoned Multifamily Residential (R-MF) and Community Business (C-3).

22SN0097 – Aerial & Land Use Plan Map



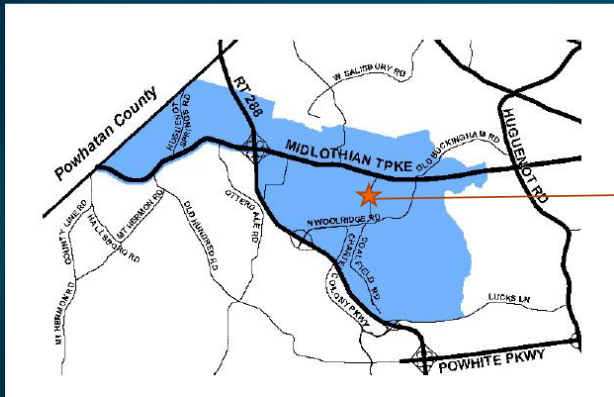
The aerial map on the left shows the subject property outlined in white. The Land Use Plan map on the right shows the subject property outlined in white and that it is designated as Suburban Residential II.

22SN0097 – Current Conditions



This is the current sign at J. B. Watkins Elementary School.

22SN0097 – Midlothian Area West



Proposed EMC at
J. B. Watkins
Elementary School

The school is located in Midlothian Area West where EMC signs are prohibited. This map from the zoning ordinance shows the Area and the approximate location of J. B. Watkins Elementary School.

22SN0097 – Recommendation



Staff recommends approval.

Staff recommends approval of this request.

22SN0097 – Zoning Map

